

Double Leaf EI₂60 / T60 High Fire Retardant Security Door

Fire Protection	EI₂60 / T60	tested acc. to EN 1634-1
Smoke Control (optional)	S_a, S₂₀₀ / RS	tested acc. to EN 1634-3
Self-Closing (optional)	up to C5	tested acc. to EN 1191
Burglar Protection	RC5	tested acc. to EN 1627

Certified in accordance with DIN EN 16034 / 14351-1 / 13241

General Building Approval as T60-2 (-RS) -FSA acc. to DIN 4102-5 / DIN 18095

Optional Audited Additional Functions

- Smoke Control	RS (S₂₀₀)	tested acc. to EN 1634-3
- Sound Insulation	up to R_{w,P} 46dB	tested acc. to EN ISO 10140-2
- Bullet Resistance	FB4/FB6	tested acc. to EN 1522
- Air Tight	up to class 4	tested acc. to EN 1026
- Rain- and Fire-Water Tight	class 6A	tested acc. to EN 1027
- Wind load Resistance	up to class C5	tested acc. to EN 1221
- Blast Resistance	up to 20 kPa	tested acc. to EN 13124-1
- Explosion Protection	up to zone 1/21	acc. to EN 1127-1 or ATEX 2014/34/EU
- Stainless Steel		

Range of Dimension

Range of Dimension for Doors **Width** from 1375 mm to 3000 mm
Height from 1750 mm to 3000 mm

Range of Dimension for Hatches **Width** from 1000 mm to 1375 mm
Height from 500 mm to 1750 mm

Technical Specification and Tender Text

Product:	EI₂60 / T60 double leaf high fire retardant security door brand Buchele tested acc. to EN 1634-1 and EN 1627
Door Type:	PLANE Line PL 602 BASIC
Resistance Class:	RC 5
Structural Opening: x mm
Door Leaf:	Double-walled, planar 70 mm thick steel door leaf without hinge embossing, three sides rebated with thick rebate. Without bottom stop. Special insulating inserts fully laid-in and glued. Passive leaf with multi-chamber sealing profile in the middle rebate. Securing pin screwed in door leaf rebate.
Threshold:	Floor bracket as separation sill. Surface galvanized and welded to the frame.
Frame:	3-sided circumferential rebated corner frame with visible black coated intumescent material in rebate. High-quality multi chamber sealing profile adjustable fixed in the three-sided groove.

Hinges:	Three-part, height adjustable construction hinges with hinge pin retention and ball bearing spacer ring for smooth door movement.	
Door Closer:	2 pieces door closer system with standard arm acc. to EN 1154 silver coloured mounted on hinge side. Door coordinator and 2 pieces of 30 mm high brackets with plastic roller.	
Fitting:	Active leaf with 6-point security mortise lock with latch lever function acc. to EN 12209 (prepared for installation of a profile cylinder lock, provided by customer). Security door handle set in acc. to EN 1906 fixed pivoted synthetic material black in U-shape with rounded long-plate. Passive leaf with self-locking concealed shoot bolt lock with upper switch lock.	
Surface:	Door leaf and frame galvanized und primed with 2K-PUR primer (Very High Solid) similar RAL 7035.	
Installation:	masonry	≥ 240 mm
	concrete	≥ 140 mm

Alternative: PLANE Line PL 602 PREMIUM with flush mounted optics

Frame:	3-sided circumferential rebated PLANE Line special corner frame for flush mounted optics on hinge side. With visible, black coated intumescent material in rebate. High-quality multi-chamber sealing profile adjustable fixed in the three-sided groove.	
Hinges:	Object hinges type VB-3D 160 adjustable in three dimensions. Fixture element with slide bearings inside for smooth door movement.	
Door Closer:	Slide rail door closer system acc. to EN 1154 silver coloured mounted on hinge side.	

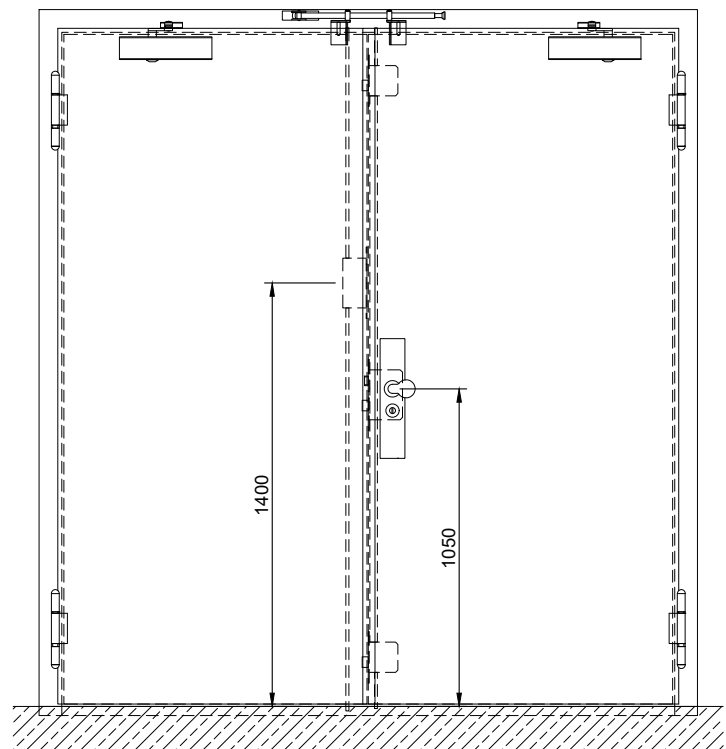
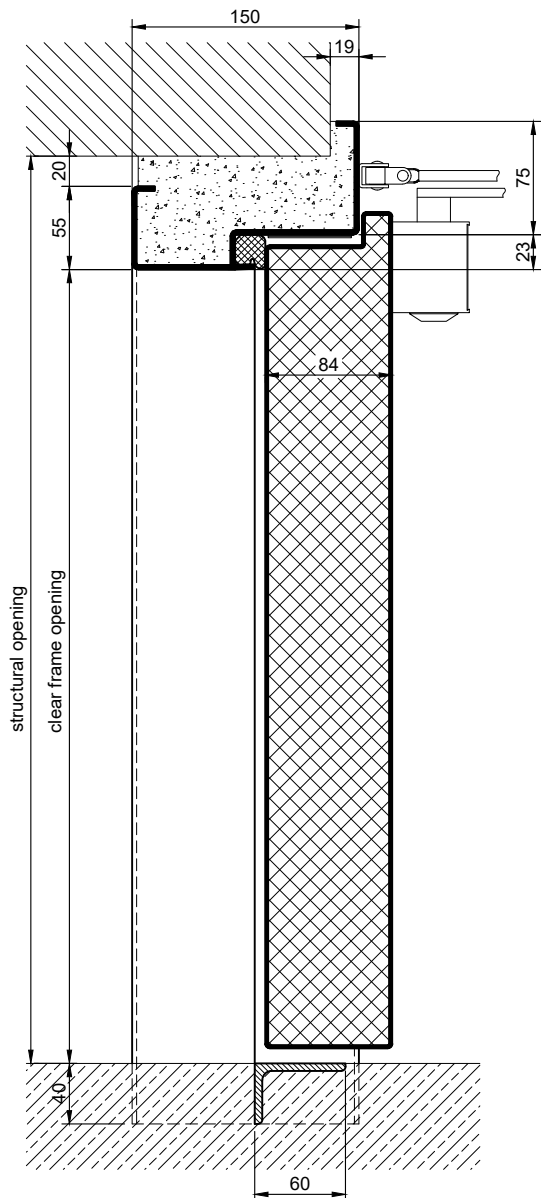
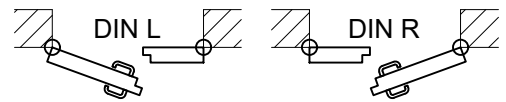
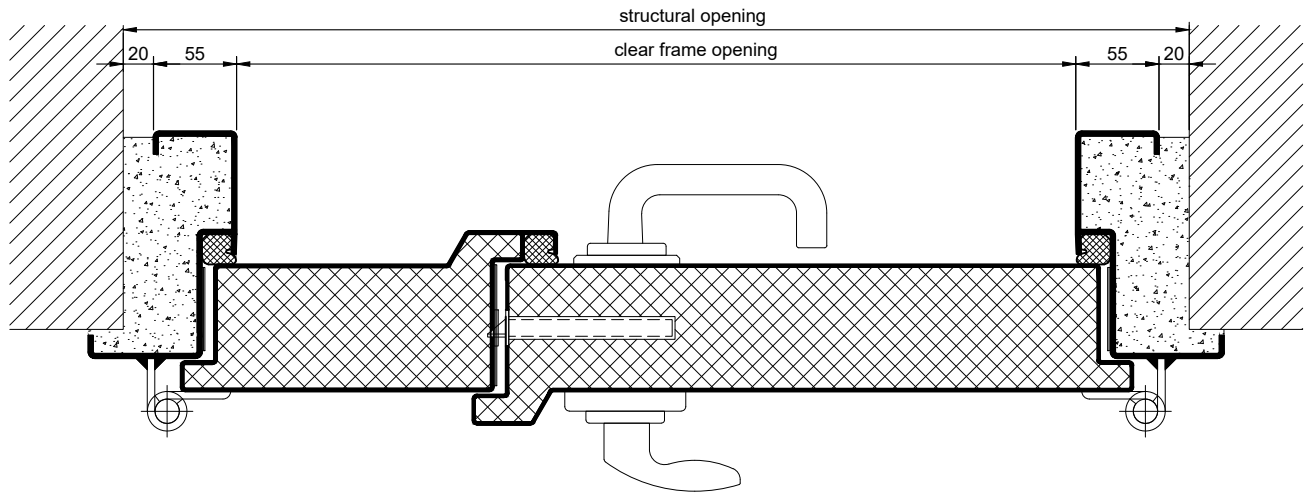
Alternative: PLANE Line PL 602 SUPERIOR with flush mounted optics

Frame:	3-sided circumferential rebated PLANE Line special corner frame for flush mounted optics on hinge side. With visible, black coated intumescent material in rebate. High-quality multi-chamber sealing profile adjustable fixed in the three-sided groove.	
Hinges:	Concealed hinge system adjustable in three dimensions.	
Door Closer:	Concealed slide rail door closer system acc. to EN 1154 integrated in frame and door leaf.	

Supplementary Equipment

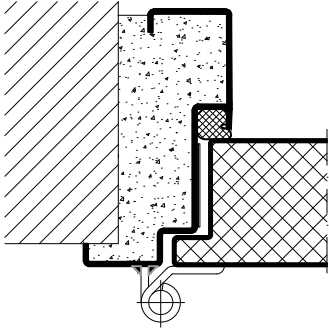
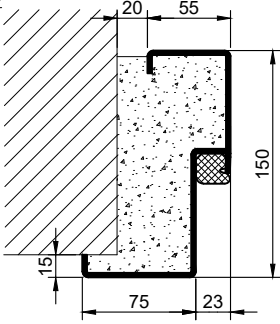
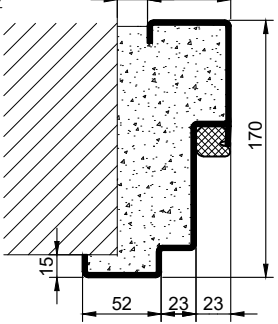
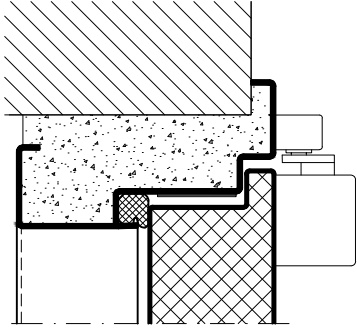
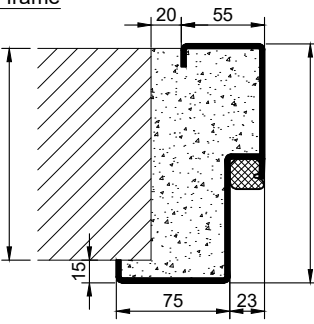
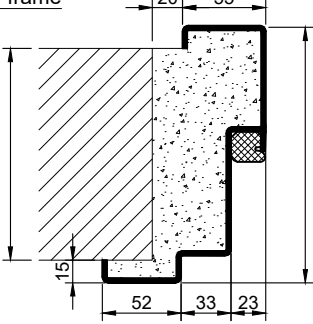
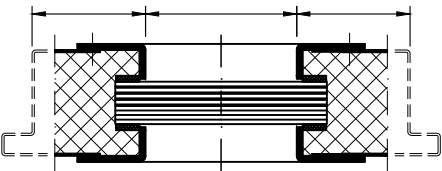
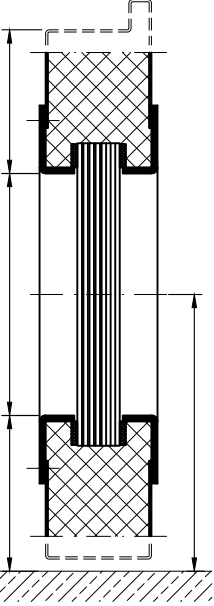
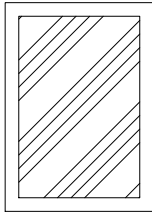
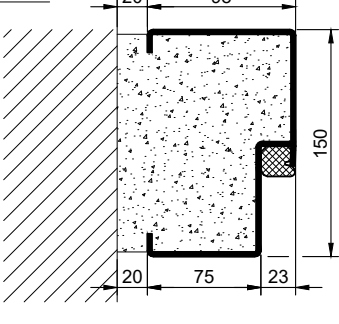
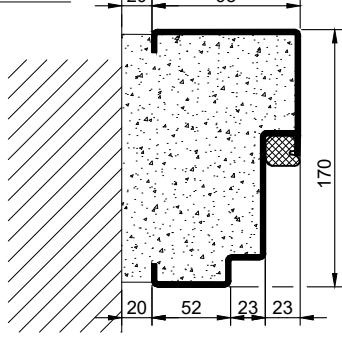
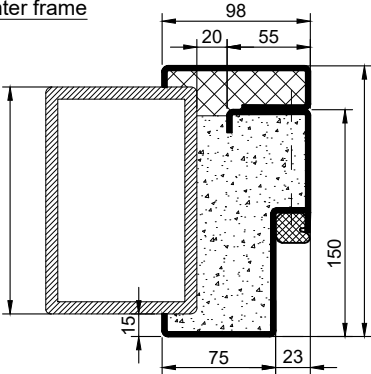
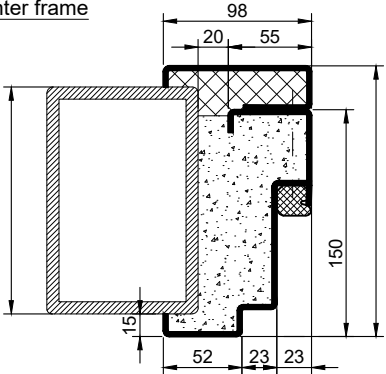
Glazing:	F60 fire-protective glazing fixed with profiled and visible screwed steel glazing bars. Minimum border 125 mm on side and top, base 300 mm.	
Stainless Steel:	Material 1.4301 (V2A) or 1.4404 (V4A), Surface mill finish or brushed.	
BUCHELE DELUXE:	The exclusive surface coating.	

BASIC - Version



1.32.4_PLANE LINE PL 602 RC5_EN

technical modifications reserved - edition 05/2024

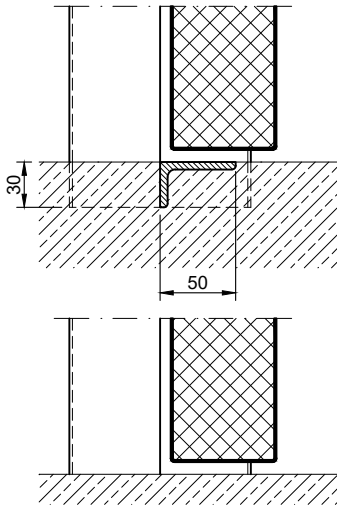
PREMIUM -Version	Frames BASIC	Frames PREMIUM
<p>construction hinges</p> 	<p>corner frame</p> 	<p>corner frame</p> 
<p>slide rail door closer</p> 	<p>encasing frame</p> 	<p>encasing frame</p> 
Options		
<p>glazing</p>   	<p>block frame</p> 	<p>block frame</p> 
	<p>corner frame with counter frame</p> 	<p>corner frame with counter frame</p> 

1.32.4 PLANE LINE PL 602 RC5_EN

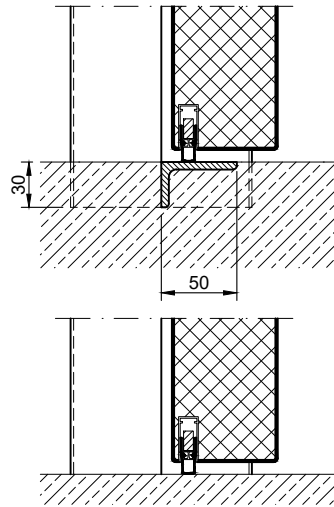
technical modifications reserved - edition 05/2024

Thresholds

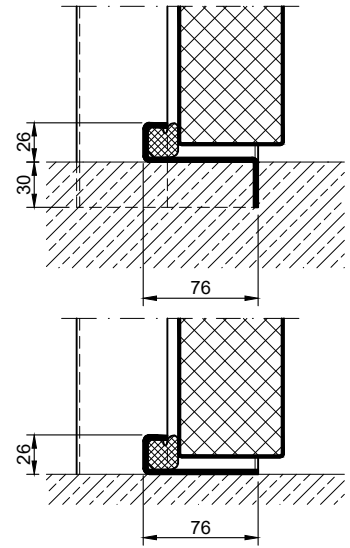
separation sill



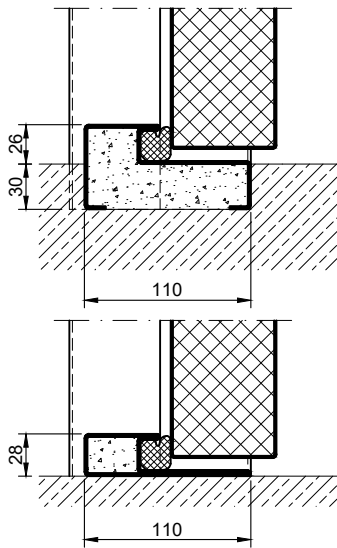
drop seal



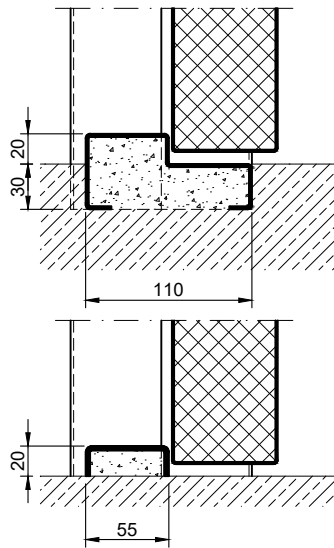
stop sill with seal



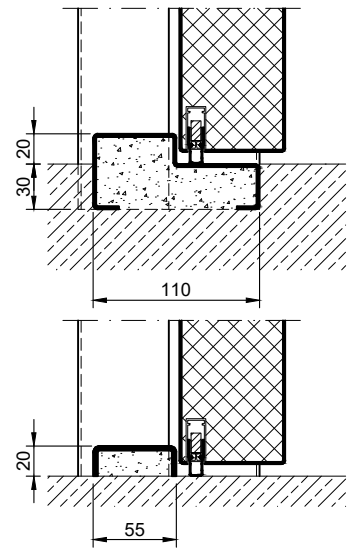
stop sill with seal



stop sill without seal



stop sill with drop seal



full sill

